

kabinet 05

The Cabinet is a mobile display laboratory used by members of Domestic Research Society. It derives its function from historical cabinets of curiosities. For its fifth public presentation it has transformed itself into a natural history cabinet of unusual creatures and animals.

SPECIMEN

Marvelling at natural diversity is the main criterion for selecting the specimens exhibited at the exhibition of Specimen research.

Parasitism, symbiosis, mimicry, domestication and post-domestication, evolution and other biology-related terminology referring to special adaptations of wild species to their environment are the topics addressed by the Cabinet's bestiary.

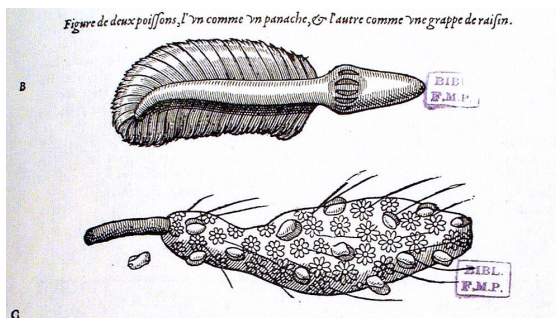
Representing both real and fantastic creatures is the oldest phenomenon in the history of art, and it is being widely used by contemporary artists. Specimen is a natural and art history exhibition of unusual animals, comprising three groups:



- custom animals which were selected or modified for commercial purposes.



- photographs of and documents about specimens of incredible and bizarre existing animal species.



- a portfolio containing a historical overview of artistic works by authors who drew inspiration and created phantasms from wildlife.

The exhibition is part of a developing project and new material will be added from its opening on 9 November 2006 to March 2007, when the project concludes with an event in which the Škuc Gallery garden will be replanted.

To visit the Cabinet between 9 November 2006 and 21 March 2007 please call +386 41 550 121 or +386 41 922 782, or write to: info@ddr.si; www.ddr.si

The exhibition is supported by the City of Ljubljana.

DOMESTIC RESEARCH SOCIETY



The Society was founded in 2004 by Damijan Kracina, Alenka Pirman and Jani Pirnat. We record, collect, research and present domestic phenomena.

kabinet 05



STARRING

**Hydra Attenuata, Cydippea,
Edentata Bradypus, Pholidota
Manis, Tubulidentata
Orycteropus, Perissodactyla
Tapirus, Monotremata
Oryntorhynchus, Dicrocoelium
Dendriticum, Latimeria
Chaiumnae, Cymothoa Exigua,
Gordus Silphae, Daubentonia
Madagascariensis,
Leucochloridium
Macrostomum, Oniscus
Assellus, RegulusBasiliskos,
Fenix, Monoceros, Scitalis,
Anphivena, Ydrus, Hallucigenia,
Marella, Nomalocaris, Biooné,
Wiwaxia, Habelia, Archerhinos
Haeckelii, Amorphia...**